



SIFU DESIGN STUDIO AND FINE YARNS CHICAGO PRIDE HAT - KNIT

Skill Level



Gauge

- * 20 sts and 30 rows to 4 inches

Materials

- * 1 skein Color A: Cascade 220 in Summer Sky #7815 (100g/220yds)
- * 0.5 skein Color B: Cascade 220 in Natural #8010
- * 0.5 skein Color C: Cascade 220 in Christmas Red #8895
- * US #7, 16 inch circular
- * US #8, 18 inch circular and DPNs

Finished Size

- * 14.5[16, 17.5, 19, 21, 22.5, 24] inches around

Techniques

- * Long tail cast-on (ltco)
- * Knit and purl (k and p)
- * Color change
- * Knit 2 together (k2tog)



Using Ltc0 and #7, 16 inch circular needles and color A, CO 72[80, 88, 96, 104, 112, 120] sts. Join work in the rnd, be careful not to twist and pm for beginning of rnd.

Rows 1–7 K2 p2 rib.

Switch to US#8, 16 inch circular needles

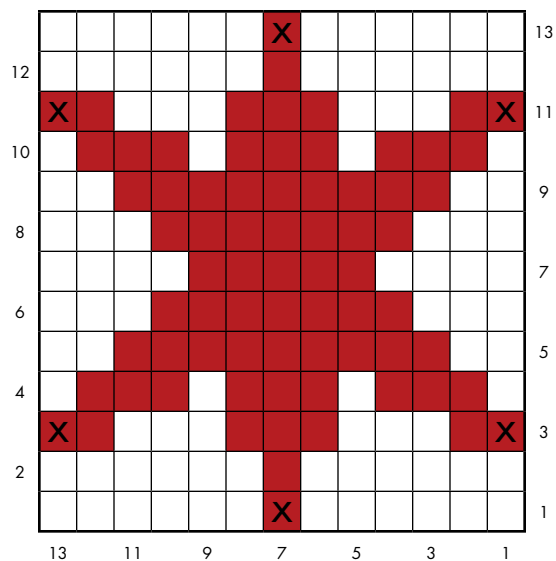
Knit 8[10, 12, 12, 12, 14, 14] rnds.

Switch to color B and knit 15(15, 19, 19, 21, 21, 21) rnds.

Switch back to color A and knit for 2(2, 3, 3, 4, 4) rnds OR until hat measures 4[5, 6, 6, 7, 8, 8] inches before decreasing.

NOTE: if your row gauge is fewer to the inch, knit fewer rows in the first band of blue. Do not change the number of rows in the white, because your stars have to fit in that band.

Use this star for the two smaller sizes.



Decreasing: For All sizes.

Row 1 *K6, k2tog. Repeat from * to end of rnd.

Row 2 (and all even rounds) Knit.

Row 3 *K5, k2tog* to end of rnd.

Row 5 *K4, k2tog* to end of rnd.

Row 7 *K3, k2tog* to end of rnd.

Row 9 *K2, k2tog* to end of rnd.

Row 11 *K1, k2tog* to end of rnd.

Row 13 *K2tog* to end of rnd.

Cut yarn, leaving a 6 inch (15 cm) tail. Thread yarn through remaining live sts and pull tight to close up center. Weave in yarn ends.

Duplicate Stitch for Stars

Start by mapping out where you are going to be placing each of the 4 stars by using stitch markers in the fabric. The x in the chart is where you should put your stitch markers. Make sure they are equidistant from the top and bottom stripes. The smallest 2 sizes use the smaller star and the rest of the sizes use the larger star.

You will have 5[7, 7, 9, 11, 13, 15] sts between stars and 1[1, 1, 1, 2, 2, 2] sts above and below the stars.

Use this star for the four larger sizes.

